

# XTRA

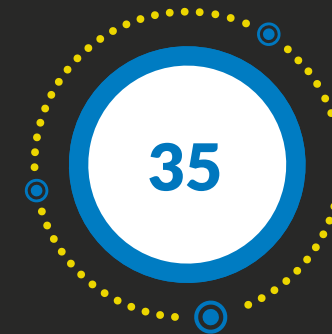
ROTARY BLOW  
MOULDING MACHINE

# SIPA STRETCH-BLOW MOLDING (SBM) EXPERIENCE IN FIGURES

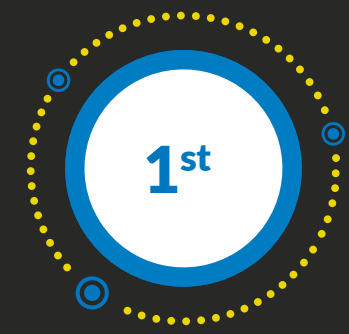


## HERE IS XTRA: XTRAORDINARY TCO PERFORMANCE

**XTRA** is a concentrate of technology, but most important of benefits: the highest bhc output in the industry, the widest active process angle, energy saving across the board, extreme user-friendliness, plus a totally open system. This perfect combination of performance, speed, quality levels and saving leads to a reduction in **Total Cost of Ownership**.  
**XTRA** is the development of PET blow moulders in every respect.



Years of experience in stretch-blowmolding (SBM) technology



First to introduce a quick mold changeover



New packaging design every year

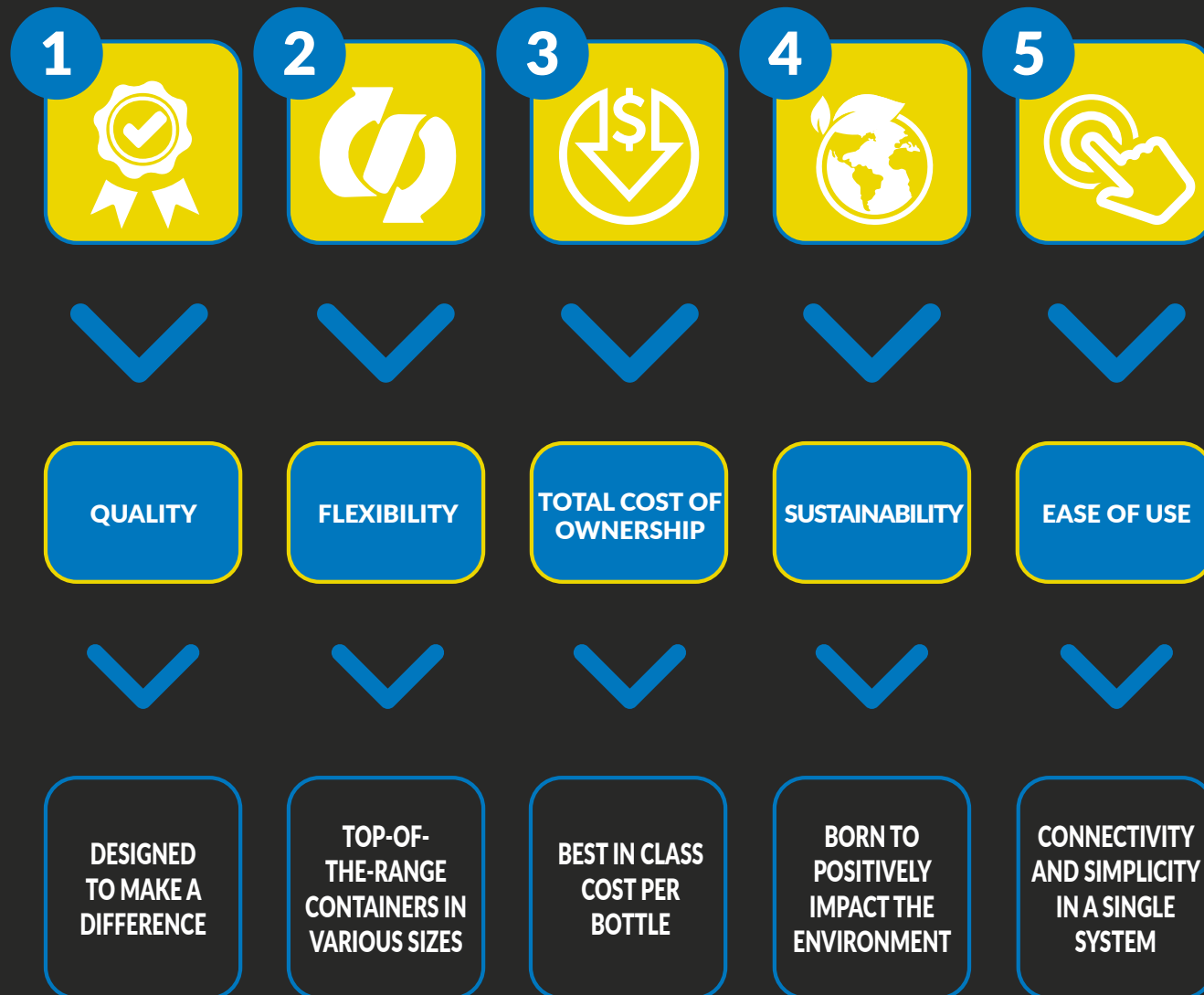


In-house know how in preform & bottle design, tooling, injection and blowing molds



# WHY SIPA XTRA?

There are **5 focus points** that make this **blow moulder** the best choice on the market thanks to the final **Total Cost of Ownership**. Each plus has its value: **XTRA** can quantify the competitive advantage for the customer on the market, with absolute quality.



## 1. QUALITY: DESIGNED TO MAKE A DIFFERENCE



The SIPA's XTRA platform is conceived to achieve top performance levels with absolute quality, combining technology evolution with productivity revolution.

- **Solid** kinematic, **simple** preform **handling**, **easy** transfer with **active grippers**
- **High output** with Best Process Angle (275°): **every bottle can be produced without stress**
- Unmatched bottle quality regardless preform material (rPET,bio-based resins)
- **Precise and consistent** cam driven mechanical **movements**
- Preform rotary unscramber; preform anti-nesting solutions; **minimal preform recirculation = higher container quality**
- Double oven ventilation = lower neck temperature with dedicated flow
- Preform dimensions are checked before entering the heating oven and **non-compliant preforms are discharged** = no oven damages





## 2. FLEXIBILITY: TOP-OF-THE-RANGE CONTAINERS IN VARIOUS SIZES



**XTRA** is able to manage, along the same line, a wide bottle size range and both hot fill and cold fill containers without having to modify the system.

- Hot fill & Cold Fill on the same machine with **no compromise on speed**
- Preferential heating for oval containers
- Containers in several sizes (**0.1 up to 3.5L**) and large sizes containers (**up to 12 L**)
- Variety of applications and materials (**rPET, TIO<sub>2</sub>, PP, bio-based resin**)
- Possibility to use **legacy shells**
- Easy and ultra **quick mold and neck change over**: dual door, multiple access point, effortless manual press opening, mold changeover in 30" tool-less
- **Upstream & downstream** integration

**XTRA 12,  
bottle to  
bottle:**

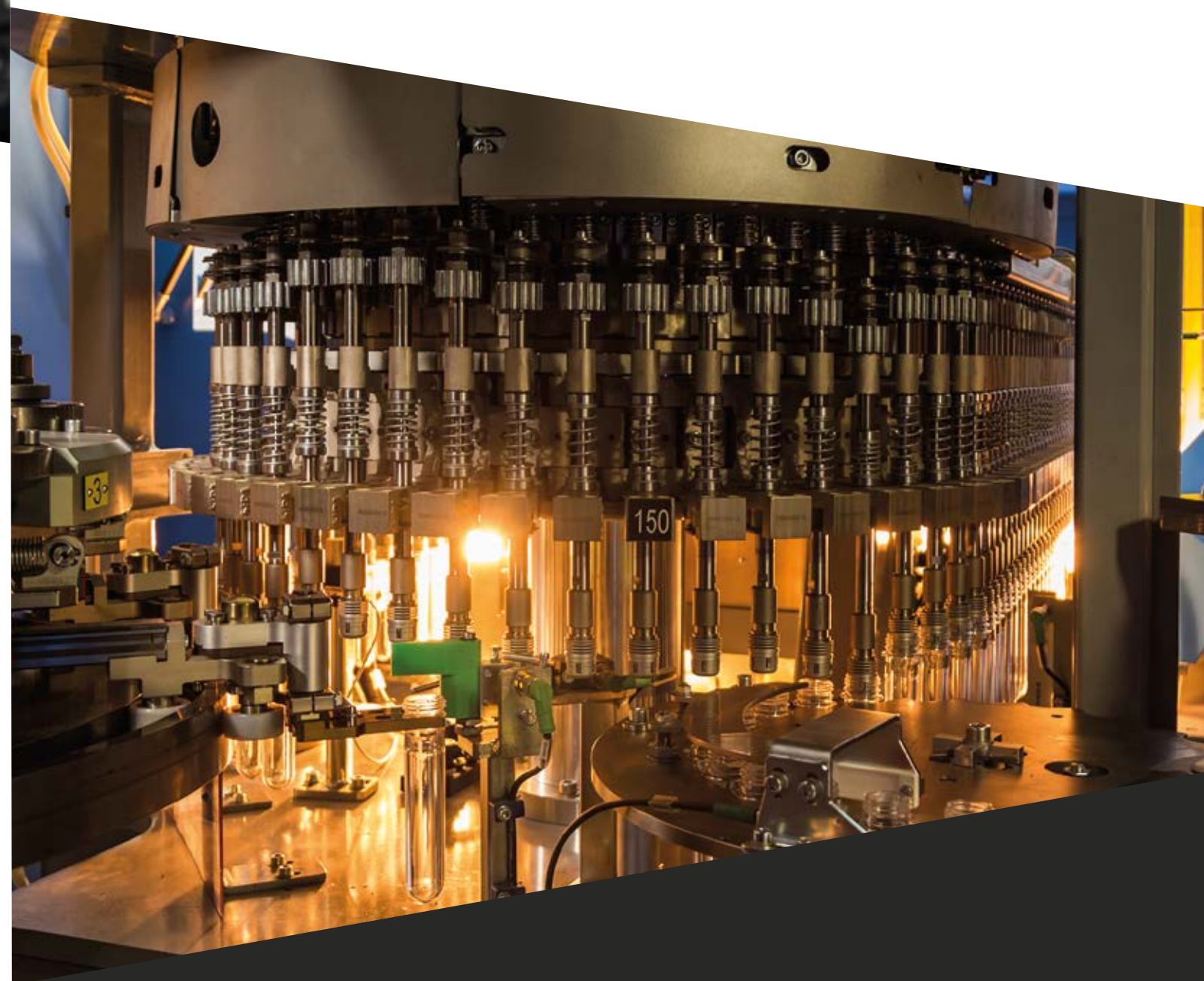
- same neck  
in **10min**
- different neck  
in **2h**

## 3. TOTAL COST OF OWNERSHIP: BEST-IN-CLASS COST PER BOTTLE



The perfect combination of performance, speed, quality levels and saving leads to a reduction in Total Cost of Ownership. XTRA is the top notch development of PET blowmolders in every respect.

- **High output** = up to 2800 bph
- **Lower consumptions** = reduced auxiliaries size
- Simple maintenance
- Extremely **easy to operate** for all skill level operators
- Ideal platform for state-of-art integration (preform-bottle-filling)







## 4. SUSTAINABILITY: CONCEIVED WITH ENVIRONMENTALLY FRIENDLY DESIGN



The process is optimised for a saving on the bottle weight and a lower energy consumption to reduce CO<sub>2</sub> emissions, with no compromise on quality, performance and durability. XTRA is born to be eco-oriented: it's designed for recycling with AWArPET, a SIPA'S brand which stands for an environmentally conscious approach to the design and production of PET packaging.

- **Double oven ventilation** = higher oven efficiency and higher lightweighting
- **rPET** and **bio-based materials**
- **Lower blowing pressure** = 16 Bar
- Low-energy consumption
- Automatic optimization of **air recovery system**
- **Lower dead air volume** = active angle
- **Wide process angle** = longer mold contact time



## 5. EASE OF USE: CONNECTIVITY AND SIMPLICITY IN A SINGLE SYSTEM



Accessible and intuitive for operators at any level, XTRA is designed to guarantee a simple and quick format change-over, with no need for tools. Also, the easy-to-use HMI implemented allows for fast and safe adjustments of all operating parameters.

- **Enhanced HMI**: user-friendly, intuitive and supportive
- Simple and **quick format change-over**, both for neck and mold
- Connectivity and simplicity **on a single system**
- Integration **with ECHO**, data exchange in customer lounge



**XTRA** is designed to exploit **ECHO**, SIPA's digital services providing full on-line remote support, immediate collection of operational data (making it easy to monitor performance, even on mobile devices), digital manuals and spare parts navigation, tracking of service requests, interactions, and shipments.





# A MACHINE DESIGNED AROUND THE PACKAGING

## APPLICATIONS

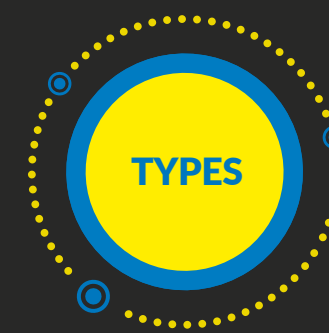
### Material & containers type

Care for packaging is a prerequisite for XTRA.

The experience of SIPA in the PET sector has led specialists to increasing optimisation of mechanical movements and preform or bottle transport within the machine to ensure smooth and safe handling.



PET,  
100% rPET,  
additives,  
multilayer,  
opaque,  
TiO<sub>2</sub>,  
biopolymers



Standard and  
customised squared,  
rectangular,  
Light Weights  
Hot fill  
Pasteurisable  
Ultra-Clean  
ESL, Aseptic  
Large sizes up to 5L  
(with XTRA BIG)  
Oval and asymmetrical  
(with XTRA  
Preferential Heating)  
Light barrier  
Gas barrier  
Humidity barrier



**REGULAR**  
with  
XTRA



**OVAL**  
with  
XTRA PH



**LARGE**  
with  
XTRA BIG



# A WIDE RANGE OF APPLICATIONS

Ideal platforms for production of containers with various designs and characteristics, for mineral water, carbonated soft drinks, Juices, tea and isotonic (hot fill & aseptic), detergents and personal care, edible oil.

SIPA



MINERAL WATER



DETERGENTS & PERSONAL CARE



ALCOHOLIC BEVERAGES



JUICES, TEA & ISOTONICS



CARBONATED SOFT DRINKS



MILK & DAIRY



LARGE SIZES



EDIBLE OIL





# XTRA

## ADDED VALUES IN FEW NUMBERS

### BEST TCO



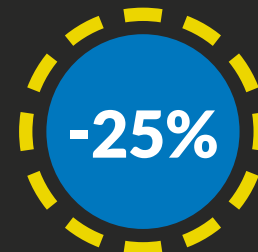
Faster than ever with the highest bottles per hour per cavity in the market.

### PERFORMANCE



With a **wider active process angle**, the plastic bottle is moulded **without stress** in record time.

### SUSTAINABILITY



Less energy used to produce PET containers.

### EFFICIENCY



User-friendly, accessible and intuitive for operators at any level, easy to use and maintain.

### FLEXIBILITY

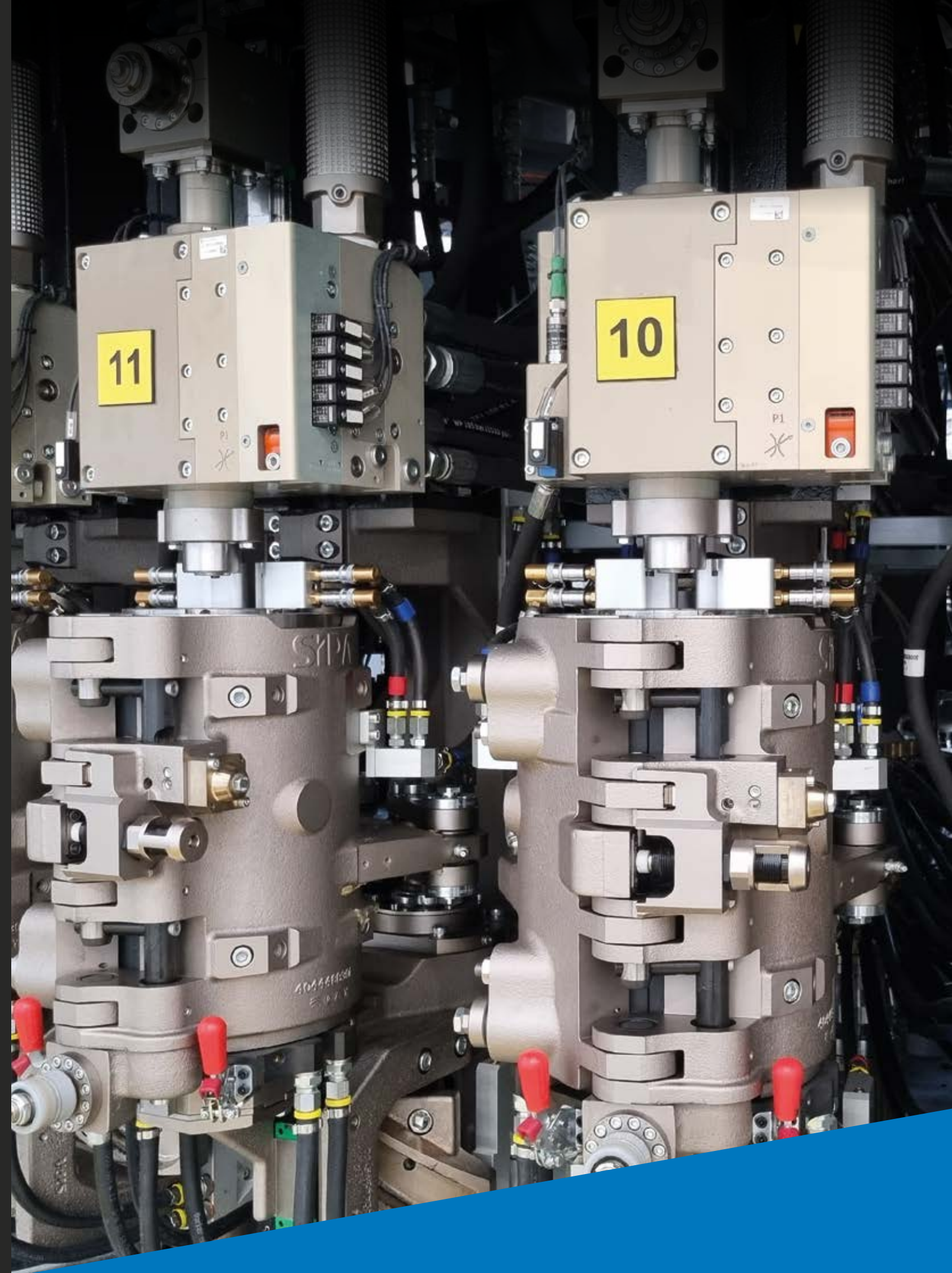


The **same machine** produces **top-of-the-range containers** in **several sizes** and for a **variety of applications**.

### INTEGRABILITY



XTRA can be **easily integrated with other types of machinery** to complement production range.







**sipa.it**

SIPA S.p.A. - Via Caduti del Lavoro, 3  
31029 Vittorio Veneto (TV) Italy  
Tel. +39 0438 911511 - Fax +39 0438 912273  
sipa@zoppas.com