

ILS-1

IN LINE SORTER - LINEAR UNSCRAMBLER



ILS-1 IN LINE SORTER

Designed for maximum flexibility with the largest range of bottle sizes, the ILS-1 can be changed over very quickly and ready for the next production run.

With a large integrated bulk hopper, container ionization, cleaning and bottle inspection, the ILS-1 has everything required for the most efficient packaging line.

The machine is fully guarded providing operator safety and very low noise emission while still allowing complete visibility of the entire operation.

The integrated inspection / rejection system makes certain that any upside down or fallen bottles are automatically returned to the machine hopper. This eliminates the need for the operator to recycle the bottles and provides maximum efficiency.

The machine can be installed in new or existing packaging lines; easily adapting to most conveyor designs.



MAIN FEATURES

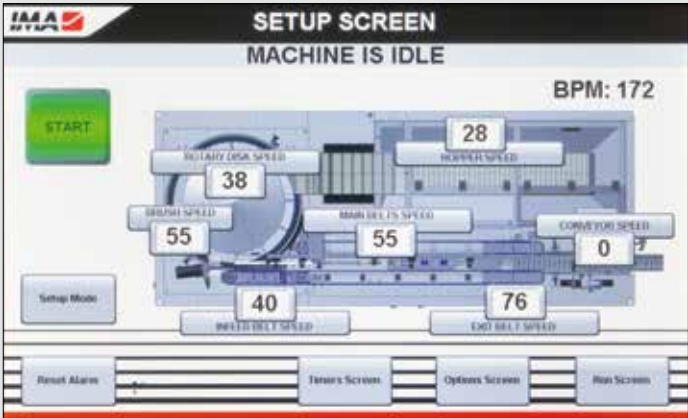
- GMP DESIGN WITH FULLY INTERLOCKED GUARDING
- VERY LOW NOISE
- INTEGRATED 525 LITER (18.5 FT³) BULK HOPPER WITH ERGONOMIC LOADING HEIGHT
- NO BOTTLE CHANGE PARTS REQUIRED
- BOTTLE IONIZATION AND CLEANING INCLUDED AS STANDARD
- INTEGRATED FALLEN/UPSIDE DOWN BOTTLE REJECTION STATION RETURNS BOTTLES TO BULK HOPPER
- DIGITAL INDICATORS AND SCALES FOR ALL CHANGE OVER POINTS
- AVAILABLE WITH ADVANCED BOTTLE CLEANING SYSTEM



HMI

B&R CONTROL SYSTEM WITH COLOR TOUCH SCREEN HMI

- RECIPE DRIVEN TOOL-LESS CHANGE OVER WITH ALL PARAMETERS STORED BY FORMAT
- MACHINE I/O DISPLAY AND DIAGNOSTICS
- ALARM HISTORY
- PRODUCTION STATISTICS
- PASSWORD PROTECTED SECURITY



Bottle Range						
	Min.			Max.		
	Length	Width	Height	Length	Width	Height
Round	30 mm (1.18")	30 mm (1.18")	40 mm (1.57")	115 mm (4.52")	115 mm (4.52")	200 mm (7.87")
Rectangular	30 mm (1.18")	30 mm (1.18")	40 mm (1.57")	115 mm (4.52")	115 mm (4.52")	200 mm (7.87")
Square	30 mm (1.18")	30 mm (1.18")	40 mm (1.57")	115 mm (4.52")	115 mm (4.52")	200 mm (7.87")

Output Speed	up to 300 bpm
Power	208 VAC, 3 ph, 60 hz, 30 A 400 V, 3 ph, 50 hz, 15 A
Compressed Air	340 lpm, 5.5 bar.

www.ima-pharma.com

May 2018 - 991LS120101

IMA S.p.A. reserves the right to make any changes to the described machine characteristics.



IMA NORTH AMERICA, INC.

7 New Lancaster Road, Leominster, MA USA 01453
Tel. +1 978 537 8534 • Toll-Free 800 851 1518 • Fax +1 978 840 0730
sales@imausa.net

IMA SWIFTPACK LTD.

Swiftpack House, 3 Arden Road, Alcester,
Warwickshire B49 6HN - United Kingdom
Tel. +44 (0) 1789 400880 - sales@imaswiftpack.com