

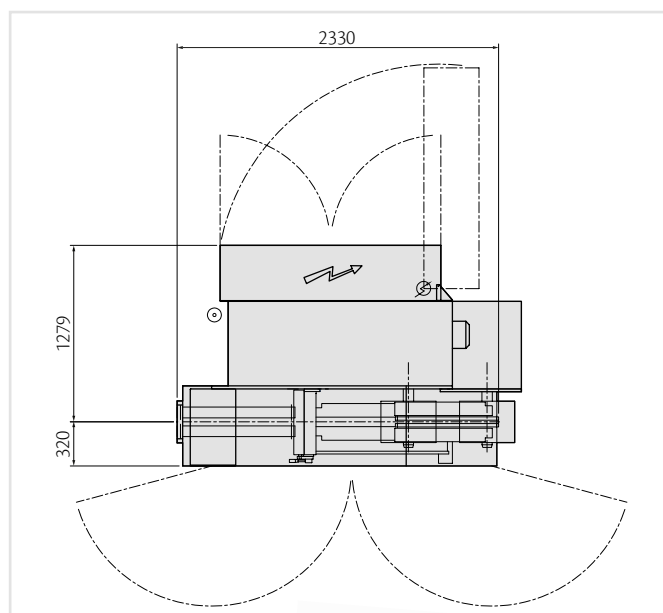
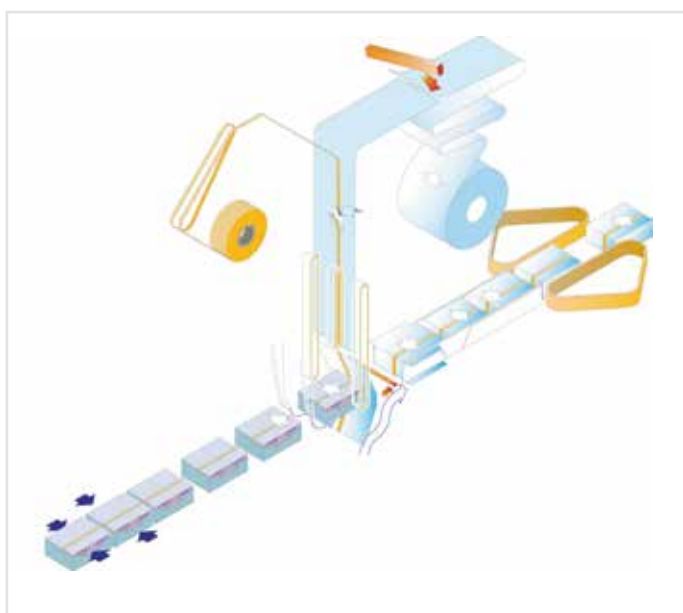
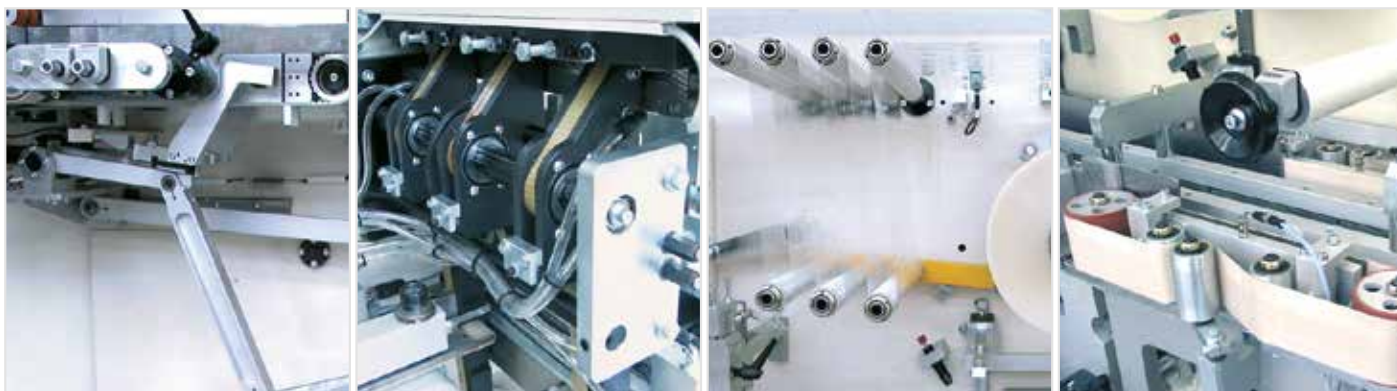
FTO518 OVERWRAPPING

OVERWRAPPING MACHINE



Overwrapping machine for display boxes; medium size boxes or multipacks with continuous product discharge system at the end of the line in order to avoid products pushing against each other during the lateral sealing stage. The machine is equipped with a tear-tape unit, a double reel holder, and an automatic film splicing.

FTO518 OVERWRAPPING



FTO518 TECHNICAL DATA

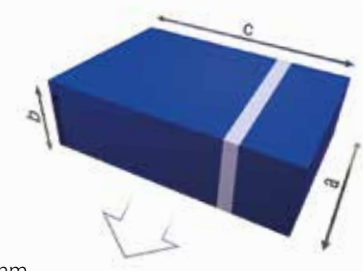
		MIN.	MAX.
Product range (single env.)	a	60	160
	b	7	80
	c	100	200
Installed power		12 kW	
Production		up to 80 ppm	
Operating pressure		6 bar	
Maximum air consumption		100 NL/min	
Weight		2100 kg	

Film type

- All heat sealable films,
such as PP, PVC, Cellophane
- Max. Reel diameter: 300 mm
 - Min. Reel core diameter: 76.2 mm
 - Max. web width: 300 mm

Product configuration

- Multipack side by side
- Multilayer



Sizes out of range can be handled after been evaluated from technical office.

GIMA S.P.A.

Via Kennedy, 17 - 40069 Zola Predosa (Bologna) - Italy
Phone +39 051 6169 711 - Fax +39 051 7523 78
info@gima.com - www.ima.it