

# GEA CompaCon® Evaporators

Skid-mounted Falling Film and Forced  
Circulation Evaporators. The next big  
thing on small-scale production.



# CompaCon® FF Series

## Falling Film Evaporator 50-3000 l/h Range

### Gentle treatment with high energy efficiency

The CompaCon® FF Series is a Falling Film evaporator suitable for food production as well as chemical and wastewater-treatment applications.

On its XS size, the CompaCon® FF Series can act as pre-concentrator for a GEA Mobile Minor Spray Dryer, boosting the powder production up to five times and giving the powder a finish closer to that of an industrial plant.

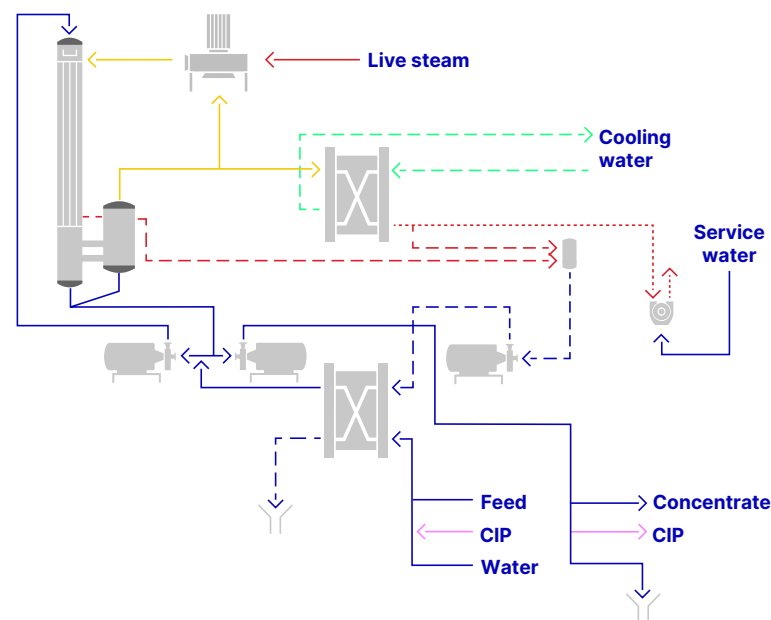
Sizes XS, S and M of the CompaCon® FF Series can be powered with thermal energy by means of a Thermal Vapor Recompressor (TVR). With more than 90 years of experience on thermal technology and TVR production from GEA Wiegand backing its quality.

Additionally, on its M and L sizes, the CompaCon® FF Series can be powered with a Mechanical Vapor Recompressor (MVR), the latest steam-free development of small-scale MVRs. Driven solely on electrical energy, guarantees a reduced CO<sub>2</sub> footprint.

All relevant components of the CompaCon® FF Series are already installed in two modules, meeting the standards for container transportation and making its assembly possible within a day. The modules come with a field checked electrical installation to get the CompaCon® FF Series up and running in the shortest time.



CompaCon® FF Series



# CompaCon® FC Series

## Forced Circulation Evaporator 50-1500 l/h Range

### Heavy duty. Compact measures

The CompaCon® FC Series is a Forced Circulation evaporator best suited for working with highly viscous liquids and insoluble containing products, apt for not only food production but chemical and waste-water-treatment applications as well.

Available on sizes S and M, the CompaCon® FC Series can be powered with thermal energy by means of a Thermal Vapor Recompressor (TVR). With over 90 years of thermal technology and TVR production experience from GEA Wiegand backing it.

The CompaCon® FC Series comes in one piece, already fully mechanically and electrically assembled, ready for the utilities to be plugged in.

The unit, fully checked and pre-commissioned with water, can be shipped in one sea freight container.

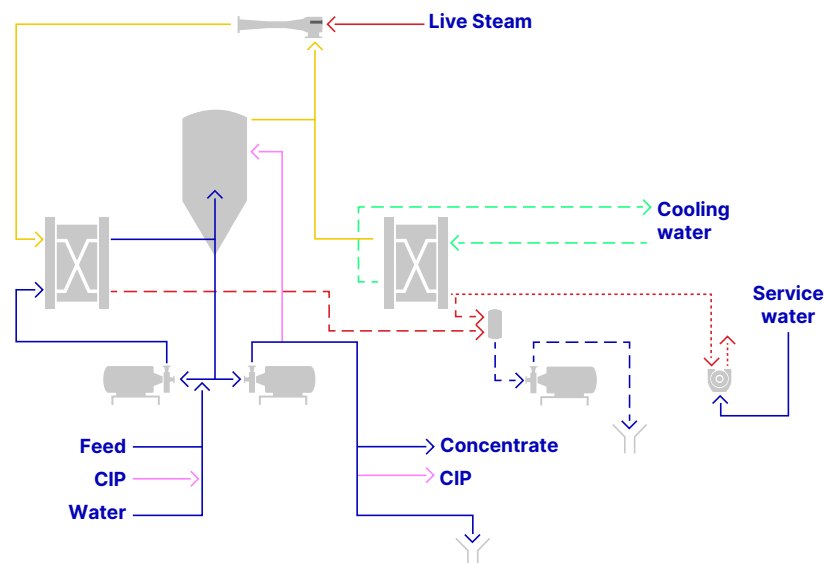
### Steady Concentrate Control

The special logic-control of the CompaCon® FC Series, guarantees the plant to run on the desired concentration. Only compliant end-product will be discharged. Any deviation from the ideal concentration will stop the discharge until the desired concentration is reached again.

The discharge will be continuous for big discharge rates and intermittent for small ones.



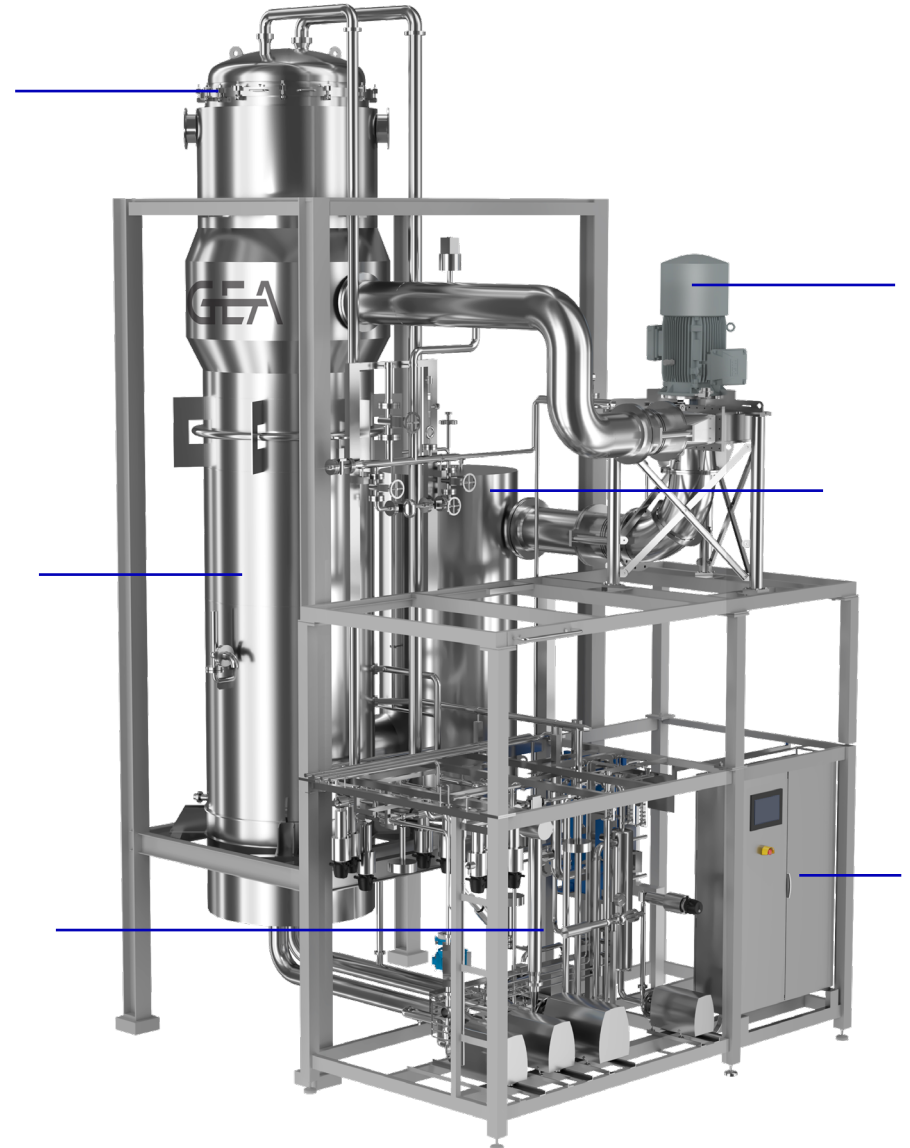
CompaCon® FC Series



# Integrated Solution

Hover over the blue dots to reveal the optional features

1. Product inlet with distribution pan
2. Heating option: TVR / MVR
3. Calandria
4. Centrifugal separator
5. Pump & Valves
6. High-end instrumentation



# Boosting your CompaCon®

Complement your process by adding modules

Feed Balance Tank



Design to feed product/CIP or emergency water and maintain the evaporation process

**3 Sizes are available: S,M,L**

- **S:** 2,3m x 1,2m x 1,8m; 500 kg
- **M:** 3,3m x 1,2m x 1,8m; 600 kg
- **L:** 3,4m x 1,2m x 2m; 650 kg

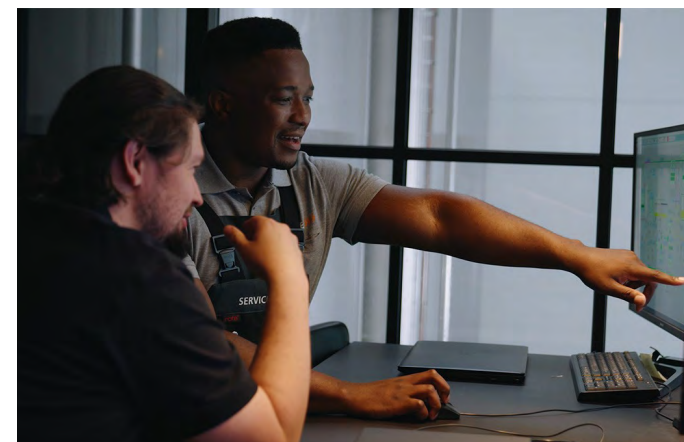
DSI (Direct Steam Injection)



Design as a sterilization step for the concentrated product, e.g. gelatin, collagen peptide, etc.

- Compact unit designed to fit the CompaCon® sizes
- **Size:** 2,3m x 1m x 1,5m; 2000 kg

GEA Test Twin



High End Factory Acceptance Test of the PLC software with our GEA Test Twin

- Realistic virtual commissioning of the HMI and PLC
- Perfect operators training tool on start up, production, shut down, cleaning weeks before the plant is installed. Securing a vertical and successful commissioning of the plant.

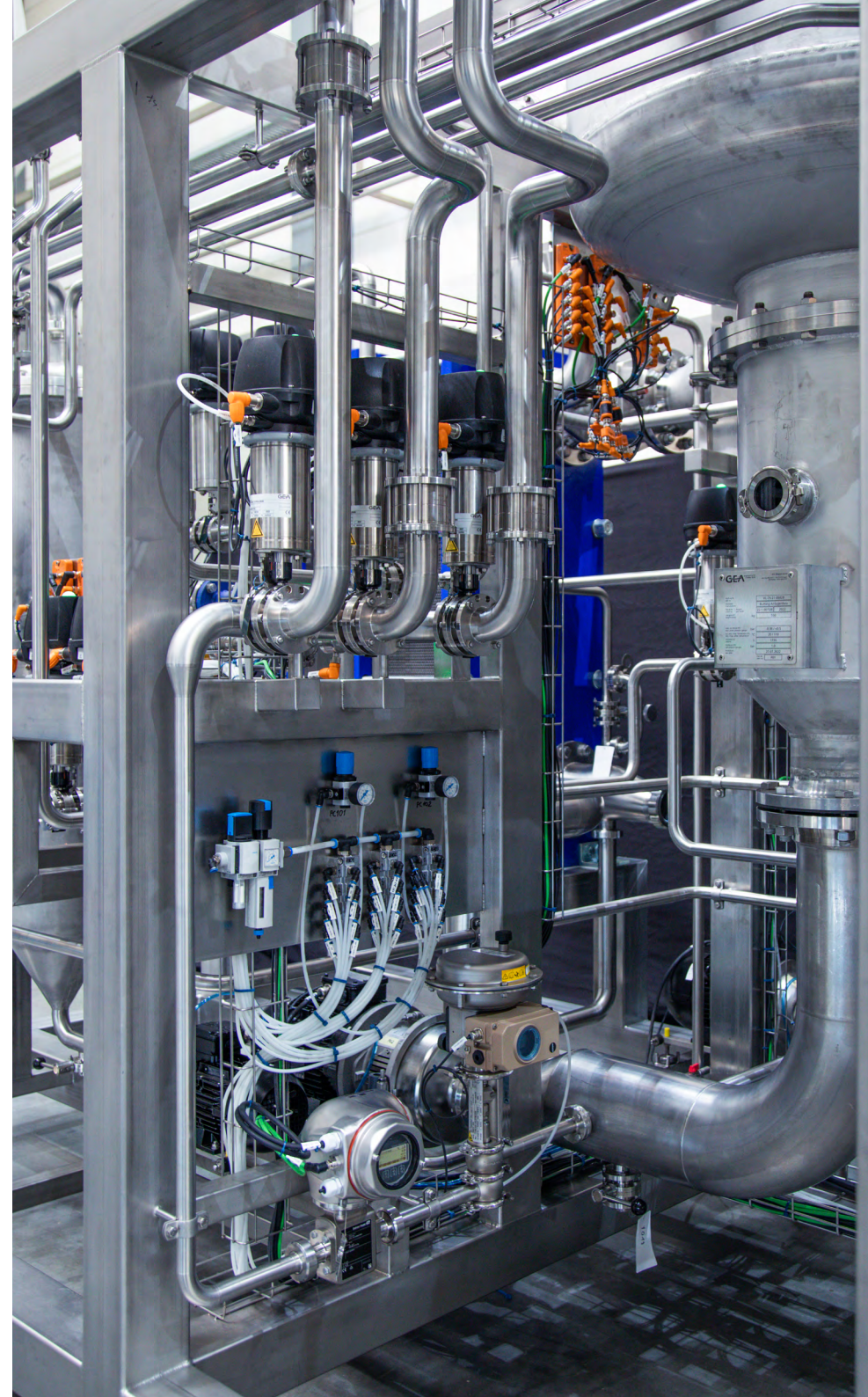


# Product-specific design

Our Test Center with GEA pilot plants is equipped to measure the performance of your product and its CIP cycle. With these product data we are able to give specific process warranties, production parameters and running time. We also take care of the optimization of the plant's energy consumption with a specific Vapor Recompressor.

## **Interested in our products or need more information?**

Please get in touch with our sales staff or browse our website where you can find our complete Evaporation Technology catalog as well as other brochures ready for download. Don't hesitate on contacting us, we will be happy help you.



**GEA Wiegand**  
Am Hardtwald 1  
76275 Ettlingen, Germany

Tel +49 7243 705-0

[gea.com/compacon-evaporators](http://gea.com/compacon-evaporators)