



# MAXIMA PELLETIZERS



# SALMATEC

<b>Pelletizers</b>	<b>03</b>
--------------------	-----------

<b>MAXIMA Model Series</b>	<b>04</b>
----------------------------	-----------

<b>Standard Equipment</b>	<b>05</b>
---------------------------	-----------

<b>Special Equipment</b>	<b>06</b>
--------------------------	-----------

<b>Type Overview</b>	<b>13</b>
----------------------	-----------

<b>Sizes</b>	<b>14</b>
--------------	-----------



# PELLETIZERS

## **Why choose a pelletizer from SALMATEC? Because pelleting is our speciality**

The pelletizer is our core product and the basis of our business success. The pelletizer has a significant impact on the shape and quality of your end product which means that you should always be able to rely on it one hundred percent. We are aware of this responsibility. This is our drive and our motivation.

Our SALMATEC pelletizers of the MAXIMA series are based on a modular design and therefore can be optimally adapted to a wide variety of tasks. In order to meet the high demands of a successful pelleting process, we ourselves place the highest demands on our design and manufacturing. Cutting edge 3D design combined with a high level of vertical integration ensures a consistently high level of quality. Without compromise.

Whether you use a machine with 15 or with 600 kW drive power, SALMATEC finds the best solution for you.

Our SALMATEC pelletizers are manufactured exclusively from high-quality materials and comply with the latest safety regulations and approval guidelines.



## This is what makes our MAXIMA series so unique

### Energy-efficient direct drive

- One-Step direct drive via standard v-belts
- Low noise
- Low maintenance
- high efficiency
- Smooth machine operation due to a large flywheel mass
- Optimized main bearing load

## Optimum press chamber design

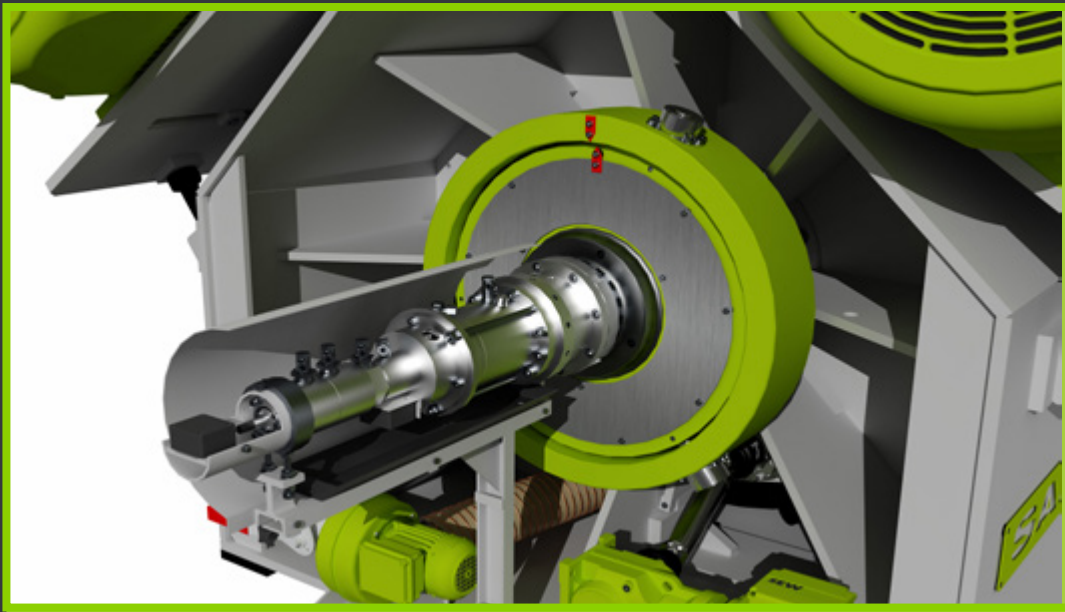
- 3 or 2 rollers
- Optionally, also automatically adjustable during operation
- Special inlets for light bulk materials

# State-of-the-art Standard Equipment

Even the standard equipment of our MAXIMA pelletizers offers you a substantial production advantage

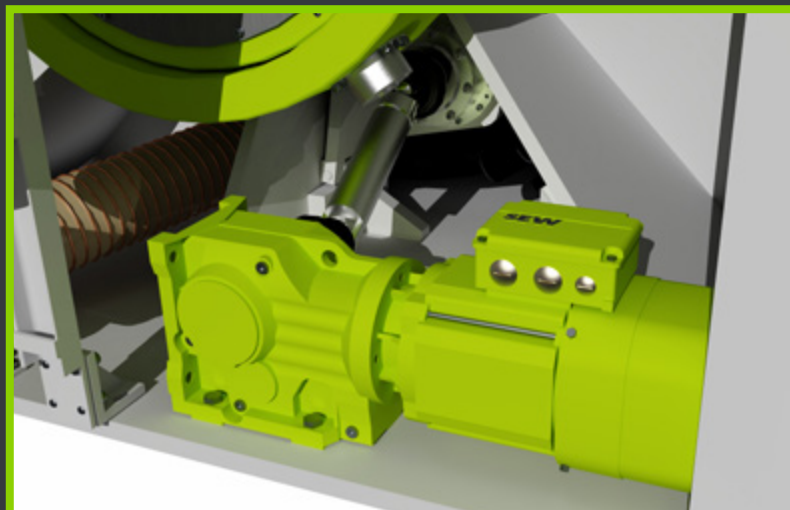
## Overload Clutch

- To protect the pelletizer from overload and foreign body impact
- After triggering, the roller package runs freely
- The safety switch sends a signal to shutdown the rotation
- More precise and effective than conventional shear pins
- Quick restarting of the pelletizer after triggering



## Maintenance Drive

- Slow rotation of the die clockwise or counterclockwise
- Easy die change
- Improved roller gap adjustment options
- Precise adjustment of the v-belt pretension
- The die can rotate with the access door open without causing any safety-related losses





# Ideally customizable for your tasks

## Automatic Roller Adjustment

Our patent roller adjustment guarantees the precise setting of the desired gap dimensions. It has been successfully in use for many years.

- ] Roller gap adjustment during operation
- ] Measuring system in the cylinder
- ] Cylinder mounted on the back of the machine
- ] No contamination of the press chamber
- ] Longer service life of the press tools
- ] Improvement of the pellet quality
- ] Patent-No.: 102010 062 477



## Choose from a wide variety of options:

### Roller with Lifetime Lubrication

- ] Resource saving
- ] Reduced operating costs
- ] Protection from contamination of the product
- ] No grease consumption during operation
- ] High operational reliability due to factory-set bearings
- ] Bearings reusable several times, depending on the application

## Lifting Frame for Rollers and Dies

- Electric winch with robust chain
- Hydraulically extendable winch
- Shortens the time of the roller and die change
- Facilitates the handling of heavy press tools
- Statically tested



## Forced Feeder

- Especially for pelleting light bulk materials
- Completely made of stainless steel
- Stainless steel conveyor paddles
- Stainless steel housing and conveyor shaft
- Inspection Opening



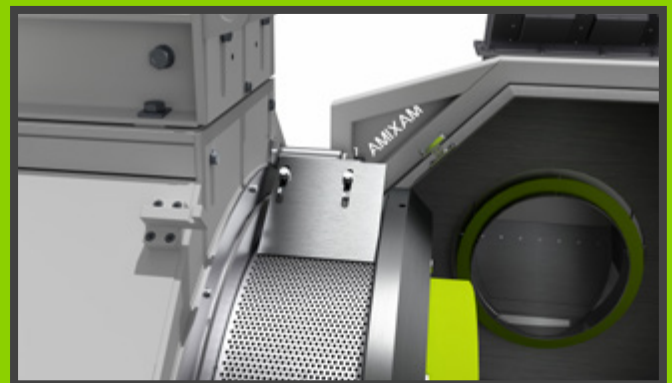
### Central Lubrication System

- Lubrication of the rollers and the main bearing
- Electronic lubrication pump
- Individual lubrication quantity regulation
- Automatically refillable
- Longer service life of the bearings
- Also suitable for minimal lubrication



### Automatic Pellet Knife Adjustment

- Simultaneous adjustment of 3 pellet knife
- Automatic, electronic adjustment
- Stepless adjustment
- Adjustment range from 0 to 50 mm



### Multi Knife

- Especially suitable for the production of fuel pellets
- Reduction of pellets with excess length
- Higher press output, as fewer excess lengths have to be separated





### Insulated and heated Access Door

- Constant temperature of the access door
- No condensation
- No adhesion of the pressed material
- Clean interior of the access door
- Insulated with high quality, chlorine-free mineral wool
- Sturdy cladding with polished stainless steel



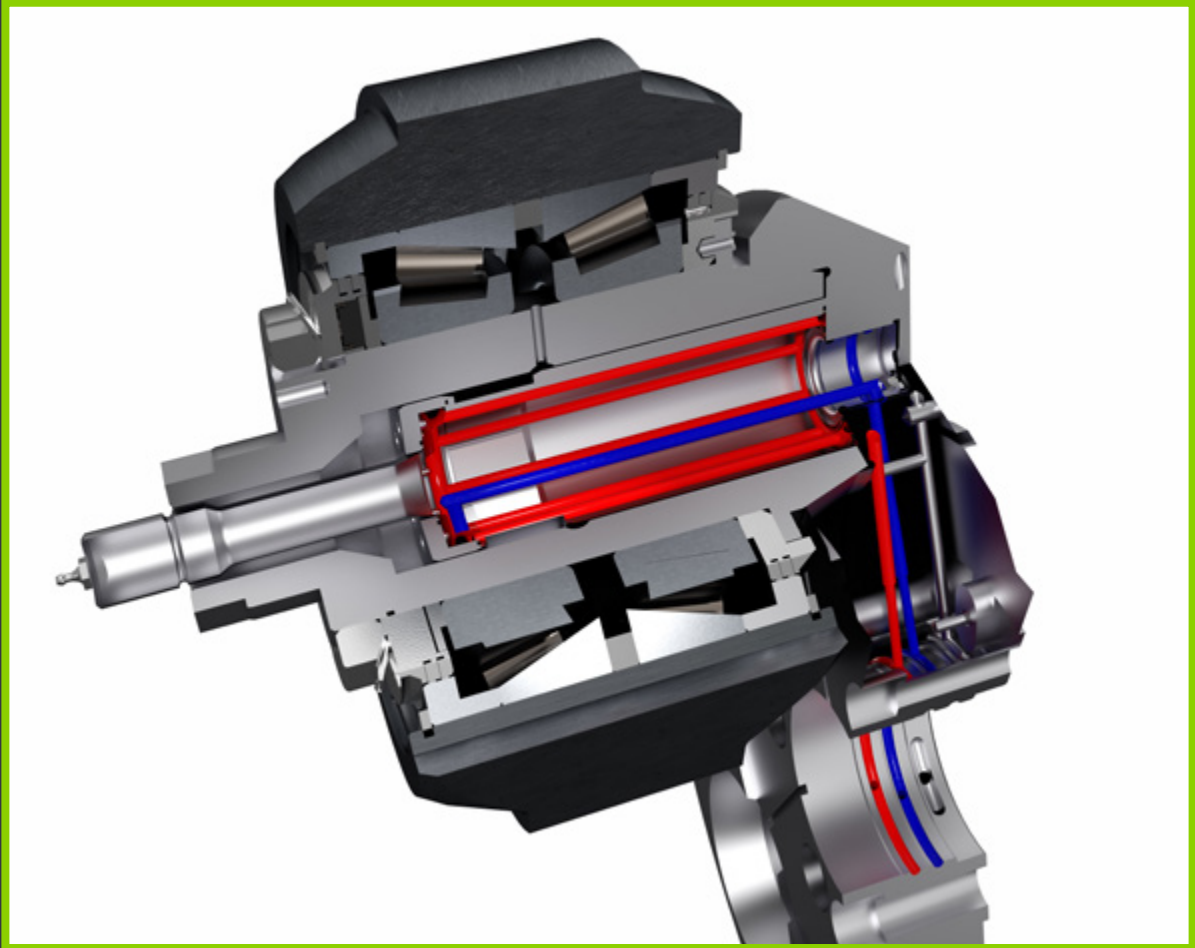
### Roller Rotation Speed Measurement

- Measuring the roller speed of your rollers
- Ideal parameter for regulating the feed-in quantity
- Higher availability due to more precise control



## Roller Cooling

- Reduction of the roller temperature by cooling the support shaft
- Cooling via a liquid cooling medium
- Suitable for raw products that easily heat up the system
- Higher operational reliability and availability



## Roller Temperature Control

- Detection of the roller temperature at the rear of the roller axle
- To avoid excess temperature in the roller
- Longer bearing life time and higher availability
- Especially suitable for materials that are difficult to pelletize

## Painting

- Individual color design of your SALMATEC pelletizer
- In addition to our standard designs, any combination of RAL colors is possible

## Vibration Detection in 3 axes

- Microcontroller-based measuring system to record vibrations in all three axes
- From this, a combined signal is determined
- Easy connection to PLC







# Typenübersicht der MAXIMA Pelletierpressen

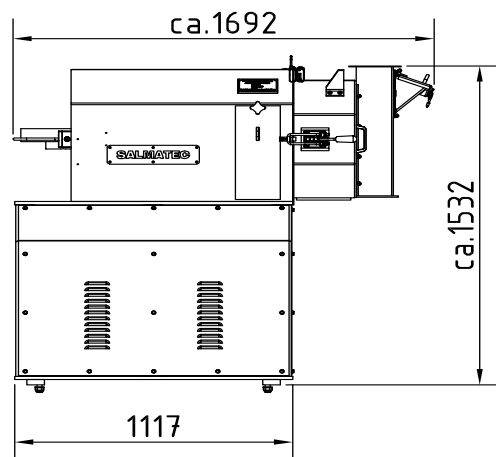
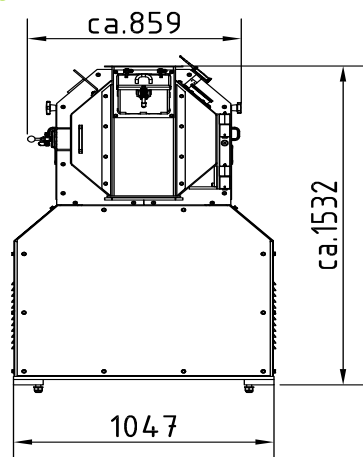
Pelletizer Model	Drive Power	Die-Ø	Die Width
MAXIMA 360 Mini	15 - 37 KW	360 mm	40 mm
MAXIMA 360 Eco	22 - 55 KW	360 mm	50 - 75 mm
MAXIMA 450 Eco	22 - 55 KW	450 mm	75 - 115 mm
MAXIMA 450	74 - 150 KW	450 mm	100 - 115 mm
MAXIMA 500	74 - 150 KW	500 mm	100 - 135 mm
MAXIMA 580	150 - 264 KW	580 mm	100 - 150 mm
MAXIMA 700	180 - 400 KW	700 mm	100 - 225 mm
MAXIMA 840	220 - 500 KW	840 mm	90 - 270 mm
MAXIMA 900	150 - 264 KW	900 mm	125 - 300 mm
MAXIMA 1000	220 - 630 KW	1000 mm	300 - 350 mm

# SALMATEC

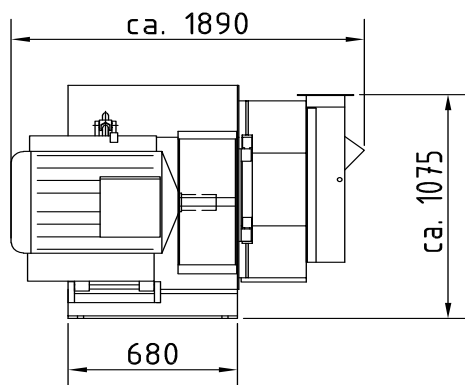
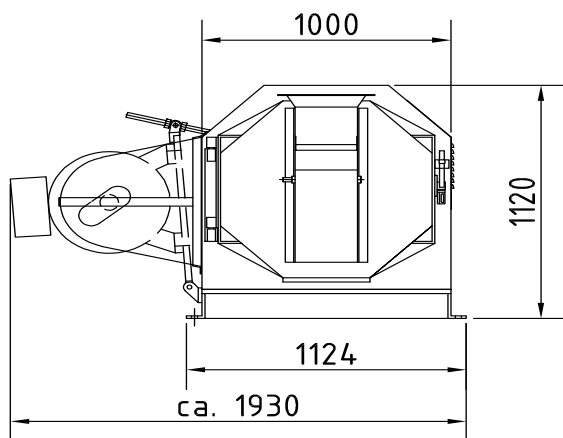
# MAXIMA Pelletizer Sizes

## Core dimensions of the individual models

### MAXIMA 360 Mini

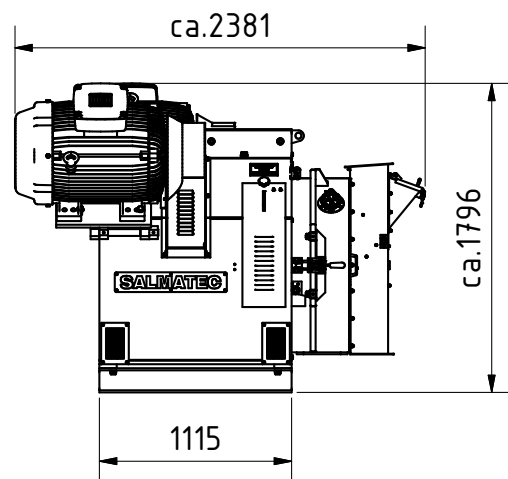
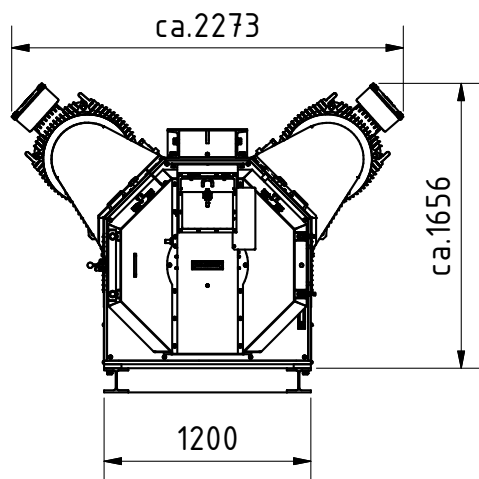


### MAXIMA 450 Eco

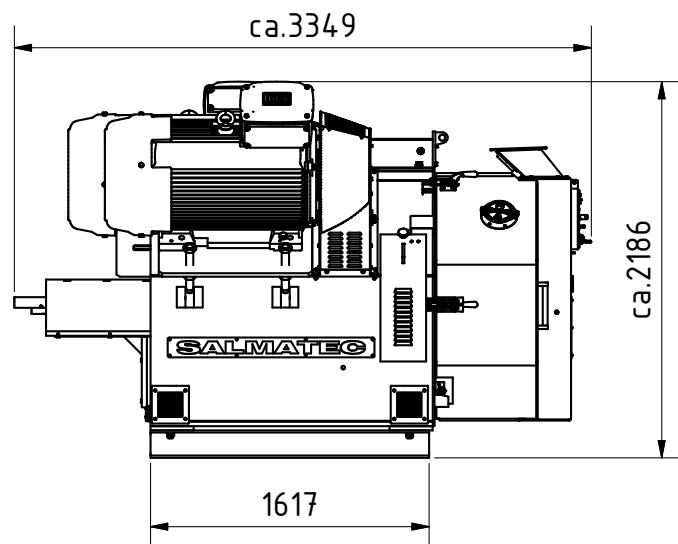
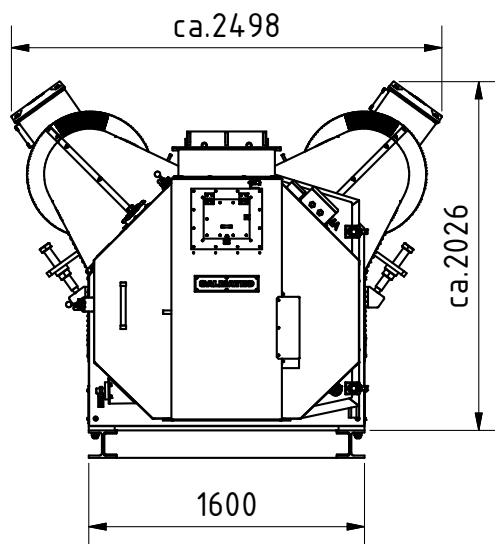




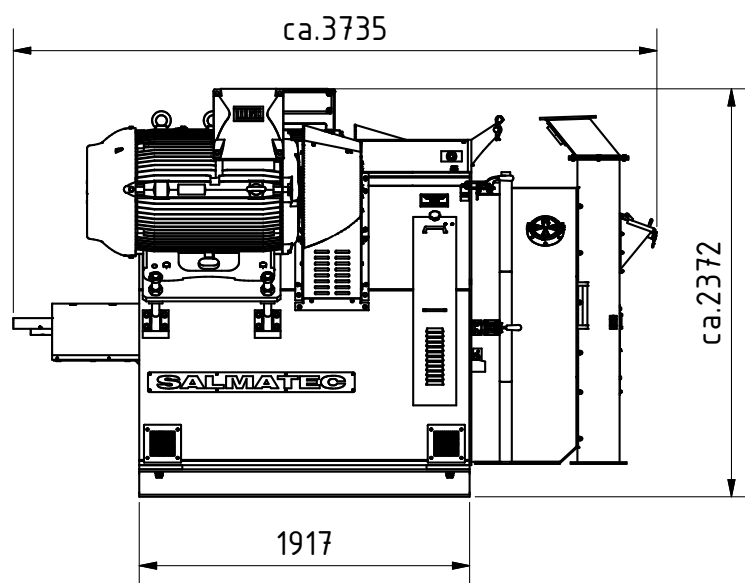
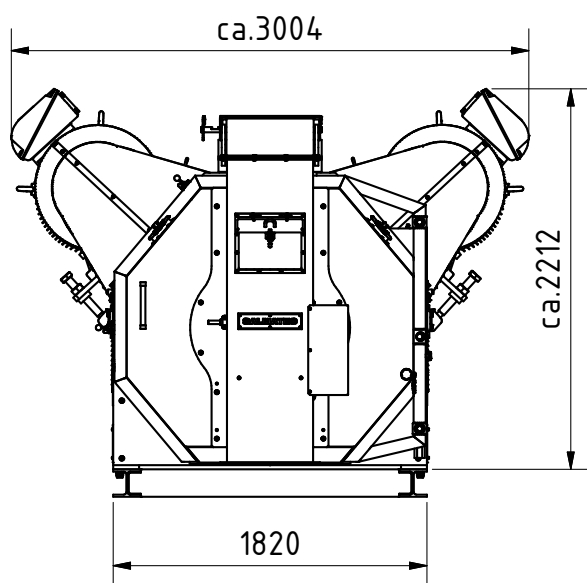
## MAXIMA 450 / MAXIMA 500 / MAXIMA 580



## MAXIMA 700 / MAXIMA 840



## MAXIMA 900 / MAXIMA 1000





## CONTACT INFO



+49 4172 9897-0



[www.salmatec.de/en](http://www.salmatec.de/en)  
[info@salmatec.de](mailto:info@salmatec.de)



Hauptstraße 79  
21376 Gödenstorf  
Germany